



Who we are





## A long history of names you know and trust

BeaconMedæ's has been at the center of the medical gas world for over 70 years, but you may best know us by one of the many names that form part of our long history.

Our heritage includes many of the best known companies and the best trusted brands ever installed as part of a medical gas or vacuum system.



## A leader in technology

BeaconMedæ's has a long history of first introductions of important technologies. As recent examples, BeaconMedæ's pioneered oil free claw pumps with Variable Speed for vacuum application, Ethernet networking for alarms, and HMI touchscreen interfaces for source equipment.

For the future, BeaconMedæ's has under development impressive technical advances which aim to improve system reliability, economy and to contribute to our client's ability to provide superior patient care.



## More than just components - **Medical Gas Systems**

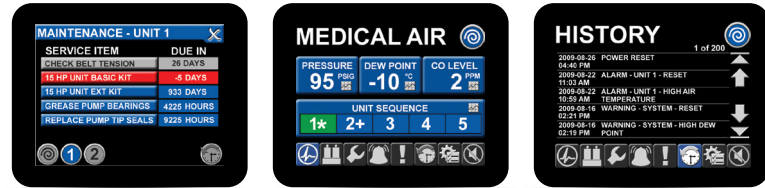
BeaconMedæ's recognizes the clinician and patient does not benefit from a medical gas outlet, they only benefit from the complete system that will reliably produce and deliver the right amount of medical gas of the right purity and vacuum with the right pressure and flow. BeaconMedæ's supports our clients with experienced specialist design services and design support to ensure the entire installed system is as good as the individual products.



## Informative sources

The BeaconMedæ's Total Alert Embedded controls open up a window to the operating condition and maintenance of your medical air and medical vacuum system that previously could only be had through expensive maintenance management software. Not only do the screens display at a glance operating data, but the convenient touch screens allow in depth appreciation of maintenance needs and potential operating problems as well as control of the systems.

Because it's Total Alert, all of this information can also be at your fingertips from any computer on the network with no special software to buy and no custom wiring to run.



## Variable speed controls

Total Alert Embedded controls also allow for Variable Speed Drive of claw vacuum systems which saves energy, reduces required maintenance and lengthens the life of the pumps.

## Designed for reliability

The BeaconMedæ's Lifeline manifold is the standard setter for reliability in medical gas manifolds. It uses balanced seat regulators switched with dome biasing to provide the highest flow and most reliable switching mechanism, with the lowest required maintenance of any manifold available today. Unlike "electronic" or "digital" manifolds, it also can still be read and operated in the event of power loss.

## Designed for medical

The BeaconMedæ's Total Alert Embedded controls are the most visible part of a totally redesigned Medical Air and Medical Vacuum range. Less visible portions include:



Scroll compressors with great improvements in maintainability.



A new layout which simplifies installation and access for maintenance.



Improvements in basic plumbing to reduce leaks and improve serviceability.



An improved medical air dryer.



New claw and lubricated vane vacuum pumps with better capacity and greater reliability.



A host of other improvements which improve installation, maintenance and reliability.

## Laboratory gas equipment

BeaconMedæ's is a global supplier of laboratory gas equipment, including air systems, vacuum systems, gas generators, and a comprehensive range of high purity gas delivery products.

Our VerusLab line of gas delivery equipment is designed for ideal performance in the laboratory facility. Verus, meaning true, real, proper, and right, stands for our commitment to quality and the integrity we put into our laboratory products. You can count on us from the beginning of your project to the final step!

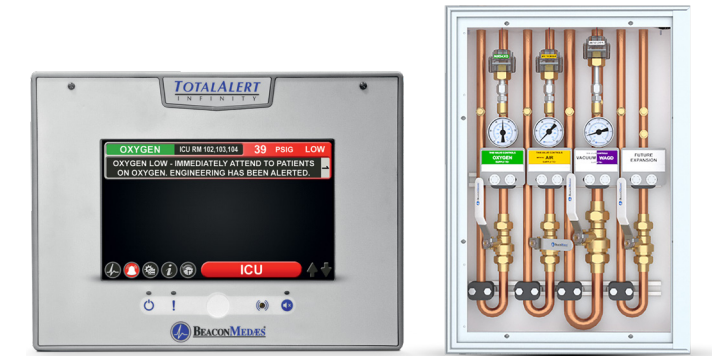
- Complete line of high purity products and source equipment
- Application and design oriented
- Meeting your specific equipment and design needs



## Valves and Alarms

Appropriate zoning is important to fire safety and maintenance of medical gases. Alarms then provide the way to ensure that everything is as it should be at the sources and up on the floors. Through Ethernet, TotalAlert Infinity alarms can replicate, or "mirror", another TotalAlert Infinity alarm located elsewhere in or outside the facility. Through the TotalAlert network, a facility's medical gas equipment can be monitored 24/7 from one central location.

TotalAlert Infinity is the first monitoring device of its kind to offer customized instructions, taking the confusion out of emergency response. With this state-of-the-art medical gas alarm, facilities can sure the right instruction gets to the right person exactly at the right time.



## Your outlet decision

Whether your medical gas outlets decision will be made to match existing or you're free to choose your outlets based on technology and up-to-date features, BeaconMedæ's is your source for the highest quality product measured in durability, reliability, and cost-effectiveness available anywhere.

## Patient environment

BeaconMedæ's offers a selection of products to complete your medical gas system in the patient care areas. Trunking, ceiling columns and articulating booms (outside the USA only) are all available through BeaconMedæ's with pre-installed outlets that match your requirements.

## Outlets that are more than a match

BeaconMedæ's is proud to offer more outlet styles than any other manufacturer, but we also are proud of the outlets we offer. With outlets, one type does not fit all. Facilities have legacy outlets and desire to minimize their parts inventories. Many wish to continue with their present style. BeaconMedæ's recognizes this and maintains one of the largest offerings of outlet styles in the industry (including USA, UK and European systems). We can usually match what you have and wish to use. If it still meets the standard, the chances are we still make it for you. Better yet, many of our outlets, such as Series B are the "gold standard" in the industry. Gemini and Chemetype are the outlets most widely used in the world, and continue to be available to the facility that wants compatibility and common parts.

On the other hand, if you are free to choose, based on feature set, DiamondCare is the most differentiated outlet style available with a unique time saving service method, distinctive appearance and durable construction.

## A long list of products you recognize

BeaconMedæ's is the manufacturer of the most widely used medical gas system components in the world. LifeLine, TotalAlert, and Diamond are just a few of the product names medical gas users around the world recognize and use every day.

## A partner in medical gas safety and education

BeaconMedæ's is involved in the writing and promotion of medical gases standards all around the world. We are proud to always meet the standard but we also know that sometimes, it's right to exceed the standard.

As part of our responsibility to our clients, BeaconMedæ's also provides the best in education and in materials to help you design and build systems that are safe for the patients, reliable for the clinicians and economical for the owner.



## And behind it all, reliability of another kind

BeaconMedæ's is part of the Atlas Copco group, a company known for financial strength, quality products, technology, service and support. Atlas Copco's world wide network of customer centers is additional support for BeaconMedæ's network of dedicated medical gas distributors and ultimately for our clients as well.

Atlas Copco is also known as one of the top environmental stewards among global companies.



## Our commitment

BeaconMedæ's is the world's leading specialist in the design, supply and installation of piped medical gas distribution systems, proudly playing a vital role in hospitals on all five continents in sustaining patients when they are at their most vulnerable.

BeaconMedæ's operates under all the world's different medical gas standards, so whether you need a system compliant with NFPA 99, ISO 7396, HTM 02-01 or some other standard, we can help.

Our main corporate offices and centers of expertise are in Rock Hill, South Carolina, U.S.A. and Staveley, near Chesterfield, England. BeaconMedæ's has four primary manufacturing locations around the world. We operate through local and regional distributors in over 40 countries and through Atlas Copco customer centers in 140 more.

Through more than 70 years, as clinical practice has evolved, we have been at the center of the interface between the patient and the care giver, meeting the need for the increasingly complex array of life support equipment that is at the heart of the modern hospital. Through research, development and applied technology, coupled with a strong focus on customer service, our business is known best for the expertise that provide's our clients with solutions tailored to their particular needs.





---

*Life is in the details.*<sup>®</sup>

